

THRIVING TOGETHER

Building Bridges To Dignity & Stability

With our **2024 - 2029 Strategic Plan**, we encapsulate the essence of Family Eldercare's vision, mission, and strategic initiatives by emphasizing the collective journey towards creating a world where vulnerable individuals not only survive but thrive within their communities. Our plan highlights the interconnectedness between the organization, the individuals we serve, and the broader community.

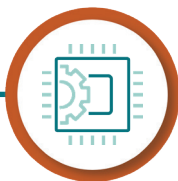
Family Eldercare invites YOU to join us in responding to the following rallying cry:

“Let’s unite to build bridges that uplift the vulnerable, foster dignity, and cultivate stability. Together, we’ll pave the way for a future where every older adult and adult with disabilities can thrive in their community.”

2024 - 2029 Strategic Plan FOCUS AREAS



Infrastructure for
Excellence



Innovative
and Impactful
Programming



Diverse and
Inclusive Culture



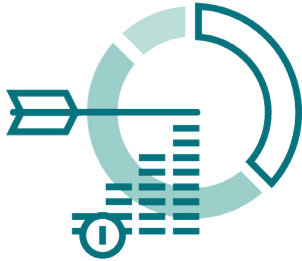
Community Visibility
and Advocacy



Building a Diverse
Funding Base

familyeldercare.org

1700 Rutherford Lane, Austin, TX 78754
info@familyeldercare.org | 512.450.0844
Intake & Referrals: 512.483.3580



OUR VISION

We envision a world where vulnerable people thrive in their community.

OUR MISSION

We provide services that promote dignity and stability for older adults and adults with disabilities.

For over 40 years, Family Eldercare has been a source of hope and support for older adults and individuals with disabilities to live in the most independent manner possible with dignity. Since inception, we have been at the vanguard of innovation. We began by providing families with eldercare support resources long before the term became mainstream. Family Eldercare was also a trailblazer in being one of the first nonprofits to offer guardianship services (person and estate) nationwide and LGBTQ+ services in our community.

As we enter our fifth decade working toward a more thriving Greater Austin and Central Texas community, we find ourselves in a dire situation. Our community lacks sufficient

affordable housing. An unacceptable number of individuals and families must allocate more than 30% of their take-home pay to have shelter. This situation is even more dire within the population that we serve.

Family Eldercare is committed to navigating the challenges—like affordable housing—that deeply impact the community we serve. Through a strategic planning process, we aim to continue providing the high quality, innovative solutions for which we're known. The Board of Directors, Management Team, advisors, staff, and volunteers embarked upon a six-year strategic plan that clarifies the organization's mission and identifies the requisite strategies and resources to get us there.



SPREAD THE WORD!

Help us amplify Family Eldercare's dedication to fostering a stronger community by sharing our narrative with your friends and network!

familyeldercare.org





Join us in building bridges for Central Texas-area older adults and adults with disabilities so they can THRIVE, and not just survive!

1

Infrastructure for Excellence

Building a solid foundation internally ensures that the organization is equipped to deliver excellence in its services and support.

2

Innovative and Impactful Programming

By focusing on innovative and responsive programming (especially housing for older adults and adults with disabilities), the organization aims to create opportunities for vulnerable individuals to thrive within their communities.

3

Diverse and Inclusive Culture

Cultivating a diverse and inclusive internal culture supports staff retention and growth, enhancing the organization's ability to serve its mission effectively.

4

Community Visibility and Advocacy

Strengthening community visibility and advocacy efforts amplifies the organization's impact and ensures that the voices of vulnerable individuals are heard and valued.

5

Building a Diverse Funding Base

A diverse funding base not only sustains the organization but also advances its mission, enabling it to continue providing crucial services that promote dignity and stability.



YOU CAN HELP BY GIVING.

Your investment in Family Eldercare supports individuals in their journey to reach a place of well-being, understanding and opportunity.

[Donate to Family Eldercare](#)

